



3 New Church Street, Bradwell, Hope Valley, S33 9JN

Saxton Mee



## 3 New Church Street

Offers In The Region Of

# £300,000

This spacious three double bedroom mid-terrace cottage offers well-proportioned accommodation arranged over three floors, complemented by an easily managed garden and off-road parking. The property occupies a peaceful setting while remaining centrally positioned and ideally located for the excellent range of village amenities and primary school available in the popular Peak Park village of Bradwell.

The accommodation comprises a fitted kitchen which leads through to a generous dining room featuring an impressive range, creating a warm and characterful focal point, along with a charming sitting room ideal for relaxation.

To the first floor, the landing provides access to two double bedrooms and a family bathroom.

The second floor offers a further double bedroom with useful eaves storage.

Externally, the property benefits from off-road parking for two vehicles, three stores and an easily maintained garden with a seating terrace, providing an ideal outdoor space.

The property is offered for sale with no upward chain.

- Period Features
- Off Road Parking For Two Vehicles
- Centrally Positioned In A Peaceful Setting
- Spacious Living Accommodation
- Excellent Village Amenities
- Easy Reach Of Manchester & Sheffield
- Easily Managed Garden & Stores
- No Upward Chain
- EPC: TBC
- Viewings: Hathersage Office

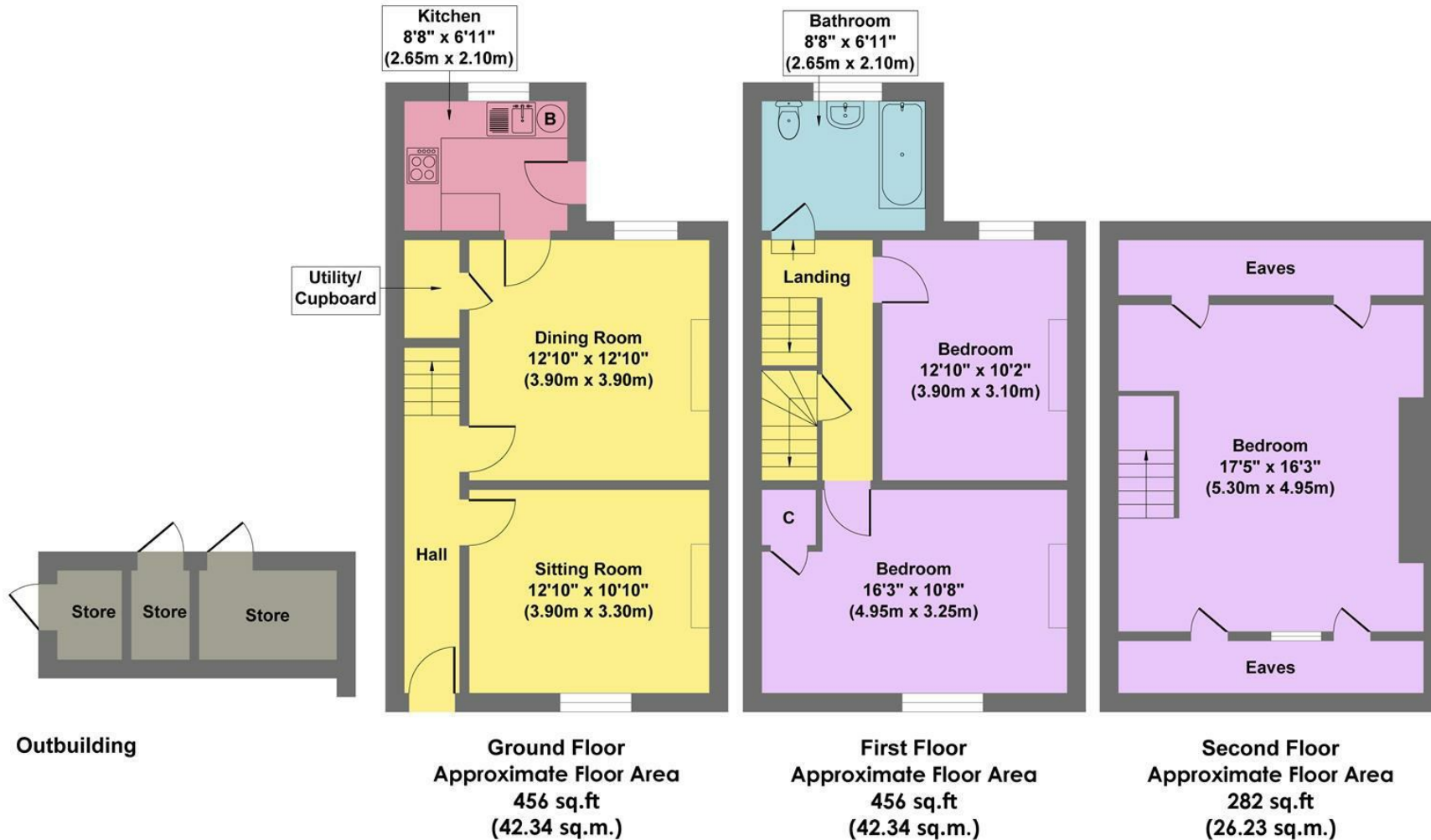








## 3 New Church Street



**Approx. Gross Internal Floor Area 1194 sq.ft / 110.91 sq.m**

Illustration for identification purposes only. Measurements are approximate, not to scale

While we endeavour to make our sales particulars fair, accurate and reliable, they are only a general guide to the property and, accordingly, if there is any point, which is of particular importance to you, please contact the relevant office. The Agents have not tested any apparatus, equipment, fittings or services and so cannot verify they are in working order. The buyer is advised to obtain verification. Please note all the measurement details are approximate and should not be relied upon as exact. All plans, floor plans and maps are for guidance purposes only and are not to scale. Under no circumstances should they be relied upon as exact or for use in planning carpets and other such fixtures, fittings or furnishings. YOUR HOME IS AT RISK IF YOU DO NOT KEEP UP REPAYMENTS ON A MORTGAGE OR OTHER LOAN SECURED ON IT. 'A Life Assurance policy may be requested.' 'Written Quotations of credit terms available on request.'

Banner Cross  
T: 0114 268 3241  
E: [bannercross@saxtonmee.co.uk](mailto:bannercross@saxtonmee.co.uk)  
[www.saxtonmee.co.uk](http://www.saxtonmee.co.uk)

Hathersage  
T: 01433 650009  
E: [hathersage@saxtonmee.co.uk](mailto:hathersage@saxtonmee.co.uk)

Bakewell  
T: 01629 815307  
E: [bakewell@saxtonmee.co.uk](mailto:bakewell@saxtonmee.co.uk)

Matlock  
T: 01629 828250  
E: [matlock@saxtonmee.co.uk](mailto:matlock@saxtonmee.co.uk)

